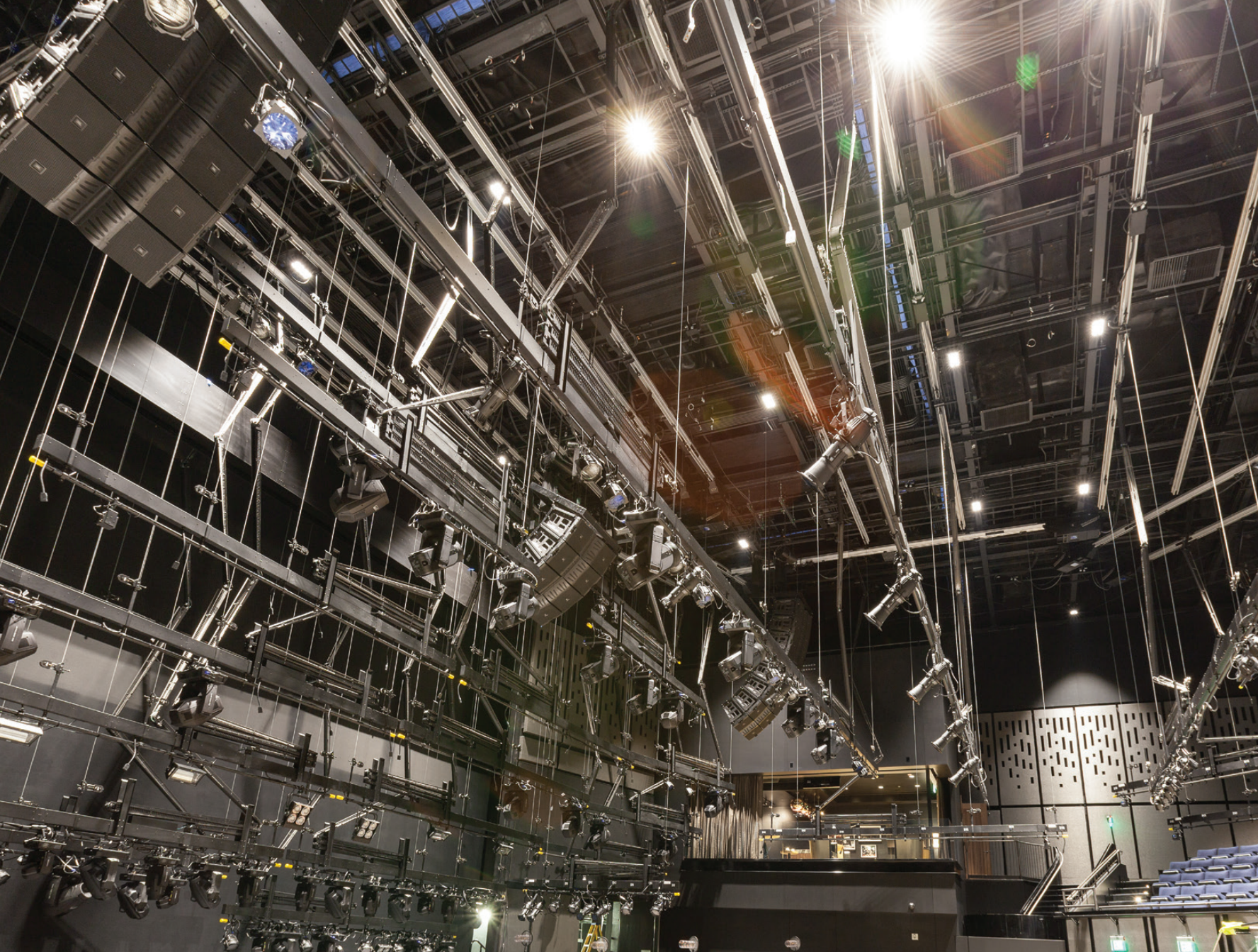




ETC Rigging



Contents

ETC Rigging Overview	2
ETC Service	3
ETC Rigging Hoists	5
Prodigy P1	6
Prodigy EXO	7
Prodigy P75	8
Vortek Classic	9
Vortek Satellite	10
Vortek Custom and Scoreboard	11
ETC Rigging Cable Management	13
Prodigy Cable Management	14
Stage Pantograph	15
Houselight Pantograph	16
Traditional Cable Management	17
ETC Rigging Controllers	19
QuickTouch and QuickTouch+	20
Foundation	21
Foundation Handheld Remote	22
Fixed-Speed Motor Starter	23
ETC Rigging Accessories	25
Accessories	26-27
Smarter and Safer Rigging Solutions	28

ETC Rigging



Raising the bar with ETC Rigging technology

With over 40 years of theater industry innovation and expertise, ETC has been closely scrutinizing the state of entertainment rigging. In 2006, ETC Rigging began developing technologies that cater to your rigging needs, based on reliability, complete system control, and, most importantly – safety. That’s why we developed our groundbreaking line of Prodigy® automated hoists – to give you a safer, smarter and more affordable way to move things than ever before.

ETC Rigging has developed numerous innovative solutions for the international rigging market with safety, quality and control at the forefront. Combined with Vortek’s decades of rigging engineering experience, ETC Rigging has doubled its rigging portfolio and now offers heavy-lift and custom hoists for markets across the globe.

ETC Service



Building a better hoist

Safety, quality and control are crucial considerations when purchasing a rigging system. That's why ETC created our automated hoists and hoist-control systems, a safer, smarter, and more affordable solution for your rigging needs. Our motorized hoists raise and lower your gear with precision and unparalleled safety, reducing labor, errors and risk to your staff.

Peace of mind

ETC wants your user experience – from installation to operation – to be the best. Our testing and inspections ensure the equipment is reliable and performs consistently before it even leaves our factory. ETC's factory technicians test all hoists and and system components, under full load, for all functions and design configurations. Each hoist also receives a final inspection by our quality department before the equipment is packaged and shipped. All Prodigy hoists, Cable Management systems, QuickTouch® QuickTouch+®, and Foundation® controllers, and circuit-distribution systems are UL Listed and Vortek hoists are ETL Listed.

Every ETC Rigging product is backed up by ETC's world-renowned 24/7 technical support and a three-year warranty, giving you guaranteed peace of mind when it comes to your investment. That's the ETC difference.

ETC Rigging Hoists



Prodigy hoists

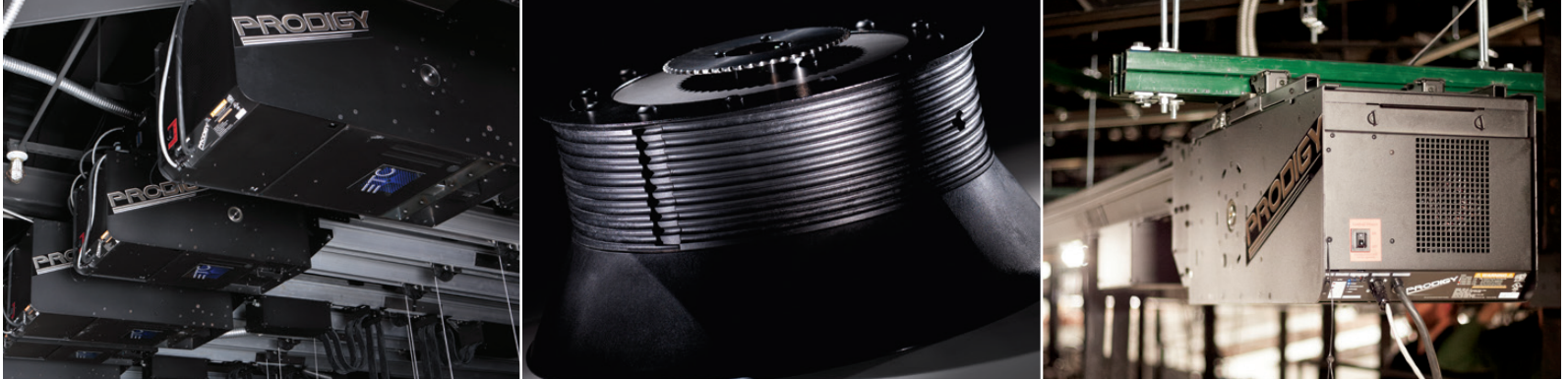
ETC's Prodigy hoists are designed with ease of use and installation in mind. Every Prodigy hoist system comes pre-reeved, tested and designed for your specific facility. All Prodigy hoists are fully tested to provide a safer and more comprehensively designed solution package that all users will be able to readily operate and appreciate. All Prodigy and P75 hoists fully and exclusively support Prodigy Cable Management technology.

Optional Compression Tube technology simplifies hoist installation within any facility by providing a light overall weight. The backbone of the Prodigy system, ETC's Compression Tube absorbs and disperses lateral loads on building steel and houses up to eight loft blocks, allowing them to be placed in locations independent of structural steel. A required component of any Prodigy Cable Management system, Compression Tube simply lifts and snaps into Mounting Brackets for labor-saving installation and can easily span up to 14 feet in length between structural members.

Vortek® hoists and controllers

Drawing on decades of engineering experience, ETC Rigging's Vortek hoists are a line of high-quality heavy-lift and custom hoists that are ideal for any standard loft-well facility that may benefit from optional near-loft block and lift solutions. The narrow chassis allows Vortek hoists to be mounted on close centers and is easily customizable for varied lifting heights and grid spans, while the mechanical brake is designed for assurance of operation. Pantograph and Traditional Cable Management solutions are a great companion for Vortek hoists within facilities that require coordinated electrical circuit solutions.

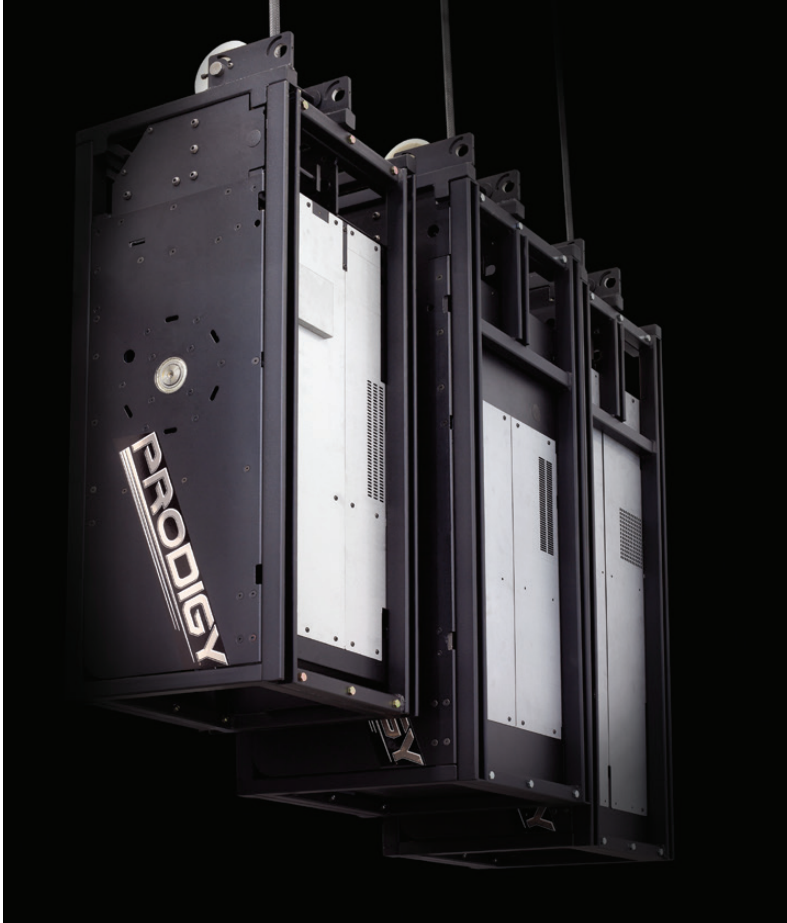
Prodigy P1



Innovative, compact and flexible, the Prodigy P1 hoist series has been designed specifically for easy installation and low maintenance. As ETC's first contribution to the automated rigging market, the P1 hoist provides up to 50 feet of vertical travel with flexible loft block spacing along revolutionary Compression Tube technology. P1 can be placed on 14-inch and 16-inch centers and integrates with all of ETC's Cable Management solutions.

- Up to eight 3/16" lift lines
- Up to 50ft in vertical travel
- Available in 208V and 480V versions
- Fixed speeds up to 30fpm; variable speeds from 0-180fpm
- Lightweight: 395-580lbs
- Working Load Limits (WLL) from 800 to 1900lbs
- Easy limit-switch adjustment with visible LED light indicators
- One-third the size of other manufacturers' hoists
- Load cell with load profiling
- Slack-line detection
- Absolute encoder
- Compression Tube technology
- Prodigy Cable Management compatible
- UL Listed
- Built to ANSI E1.6-1 motorized-hoist standards
- Dual-brake system (motor and load)

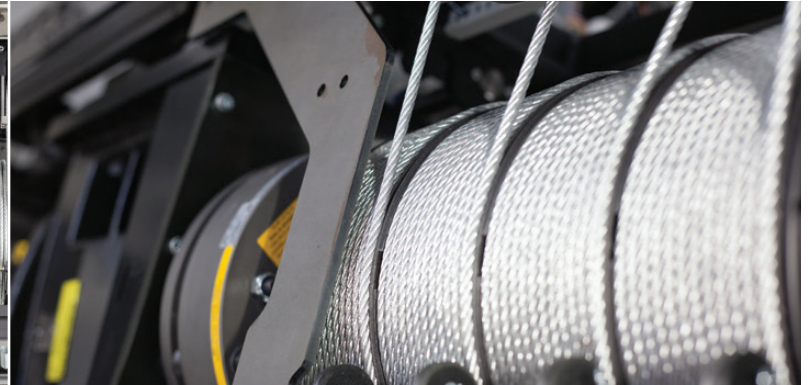
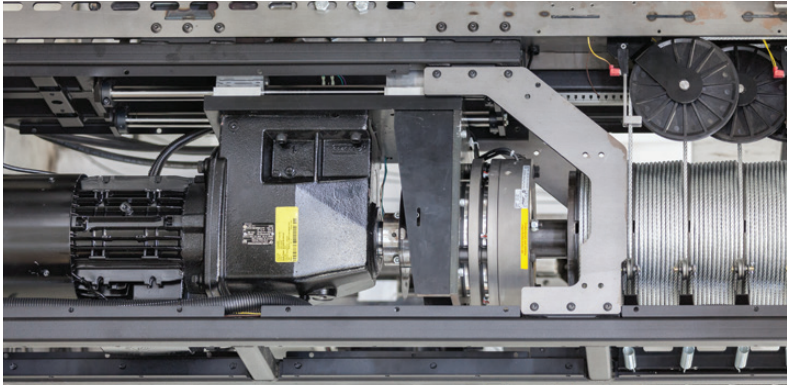
Prodigy EXO



Prodigy EXO provides even greater flexibility with three installation configurations – upright, underhung and vertical – plus the ability to mule lift lines. EXO can be incorporated with existing grids and loft blocks, making it a perfect solution for counterweight replacement that does not require Compression Tube technology.

- Up to eight 3/16" lift lines
- Up to 50ft in vertical travel
- Mounted upright, underhung or vertically
- Available in 208V and 480V versions
- Fixed speeds up to 30fpm; variable speeds from 0-180fpm
- Weighs 450-660lbs
- Lifting capacities from 900 to 2,000lbs
- Dual-brake system (motor and load)
- Load cell with load profiling
- Slack-line detection
- Absolute encoder
- SoftLift technology available for fixed-speed versions
- UL Listed
- Built to PLASA/ANSI E1.6-1 motorized-hoist standards

Prodigy P75



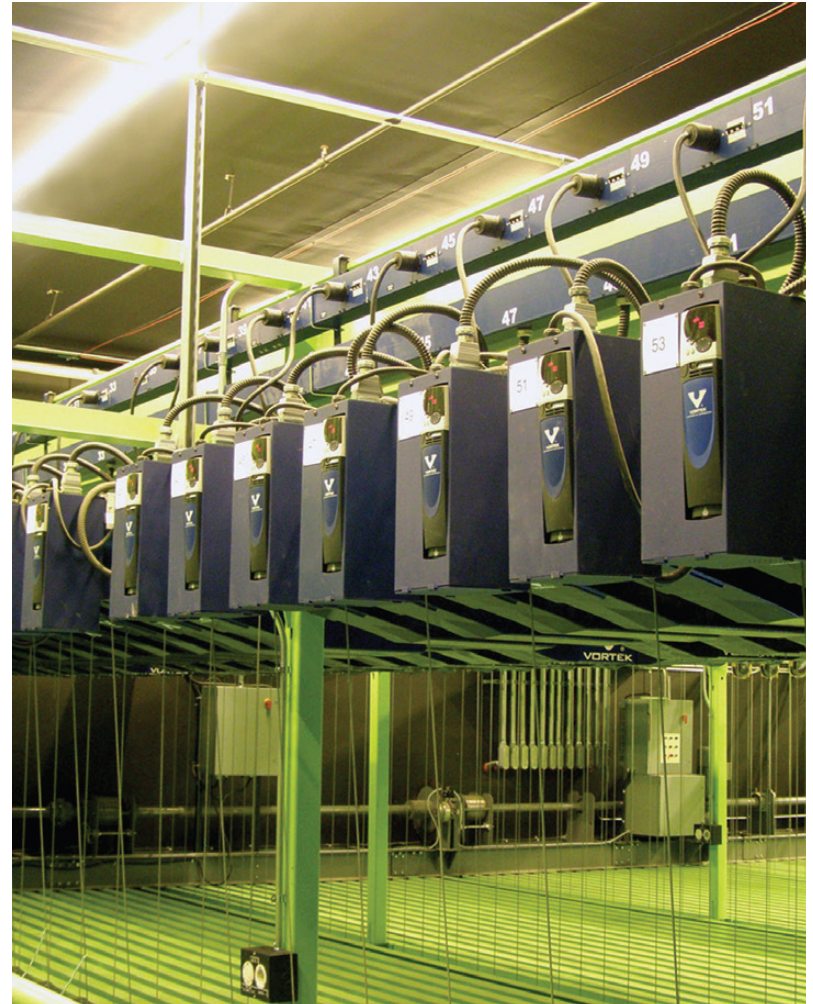
Built for larger loads and houses, P75 offers up to 75 feet in vertical travel and 3,300lbs of lift capacity. P75 continues ETC's tradition of flexible installation with three mounting options, optional Compression Tube technology, and the unique ability to route lift lines from both ends of the hoist. P75 is also compatible with optional technology such as Prodigy Cable Management and SoftLift, while retaining all of Prodigy's extensive safety features and exceptional serviceability.

- Up to eight ¼" lift lines
- Up to 75ft in vertical travel
- Lift lines may exit the powerhead at both ends of the hoist
- Mount upright, underhung or vertically
- Available in 208V and 480V versions
- Fixed speeds up to 20fpm; variable speeds from 0-180fpm
- Lift capacities from 1,200 to 3,300lbs
- Weighs 875lbs (1,070lbs for the 3,300lbs model)
- Load cell with Load Profiling (intelligent-load monitoring)
- Slack-line detection
- Zero fleet angle design
- SoftLift technology optional for fixed-speed versions
- Compression Tube optional; Prodigy Cable Management compatible
- UL Listed
- Built to PLASA/ANSI E1.6-1 standards

Vortek Classic

With multiple mounting options and lift capacities ranging from 800lbs to 2000lbs, Vortek Classic hoists are unique in that they are easily adjusted for a variety of non-standard layouts. Vortek Classic hoists do not depend on an external power source for release and are perfect for venues looking for a self-contained and flexible hoist with a fully mechanical secondary brake design.

- Up to seven 3/16" lift lines
- Up to 62ft in vertical travel
- Narrow width for 9" centers
- Mount upright, underhung or vertically
- Fixed speeds up to 40fpm; variable speeds from 0-180fpm
- Weighs 650lbs
- Patented Vortek mechanical load brake: a fully mechanical fail-safe secondary brake design
- Zero fleet angle design
- SoftLift technology optional for fixed-speed models
- ETL Listed



Vortek Satellite



The compact Vortek Satellite hoist is perfect for any retail environment, house of worship, convention facility, or other type of venue that requires easy access and control of display banners that are hung in typically hard-to-reach areas. The Satellite hoist's convenient wireless handheld remote will also save you time and help avoid use of clumsy ladder equipment.

- Two lift lines
- Up to 60ft in vertical travel
- Lifts up to 150lbs
- Variable speeds from 0-18fpm
- Weighs 93lbs
- Electromechanical primary and secondary brakes rated at a minimum of 150% of full load
- Vortek positively-guided zero fleet-angle technology
- Horizontally-underhung units standard; special mounting optional
- Wireless remote control standard; alternate control systems optional

Vortek Custom and Scoreboard



Whether low-speed or high-speed, high-capacity Vortek hoists are used in facilities of all sizes – from high school gyms to professional arenas. Vortek hoist technology combined with the principle of single point of failure prevention design makes Vortek Scoreboard hoists the standards in the arena rigging industry. Custom hoists are also available to accommodate any kind of lift capacity or mounting option imaginable.

- Any number of 3/16" or larger lift lines
- Speeds from 3fpm to 234fpm or as required
- Up to 100ft in vertical travel (more upon request)
- Lift capacities from 2,200-150,000lbs and beyond
- Electromechanical secondary load brake provides redundancy and controlled stopping
- Optional pneumatic or hydraulic brakes
- Zero fleet angle optional
- SoftLift technology optional

ETC Rigging Cable Management



Our Cable Management solutions combine decades of knowledge in UL-Listed circuit and data wireways with the modern needs of compact and safe-running cable technologies. Hoists with Cable Management can raise and lower fixtures for focusing and maintenance without unsightly spools of cables suspended in the air, and without sacrificing space.

All ETC Cable Management solutions are rated for 100% of load and come pre-reeved to save time and money on installation. Data options include DMX, Ethernet, video and audio capabilities. Optional barriered emergency-circuit designs are also available within several types of Cable Management packages.

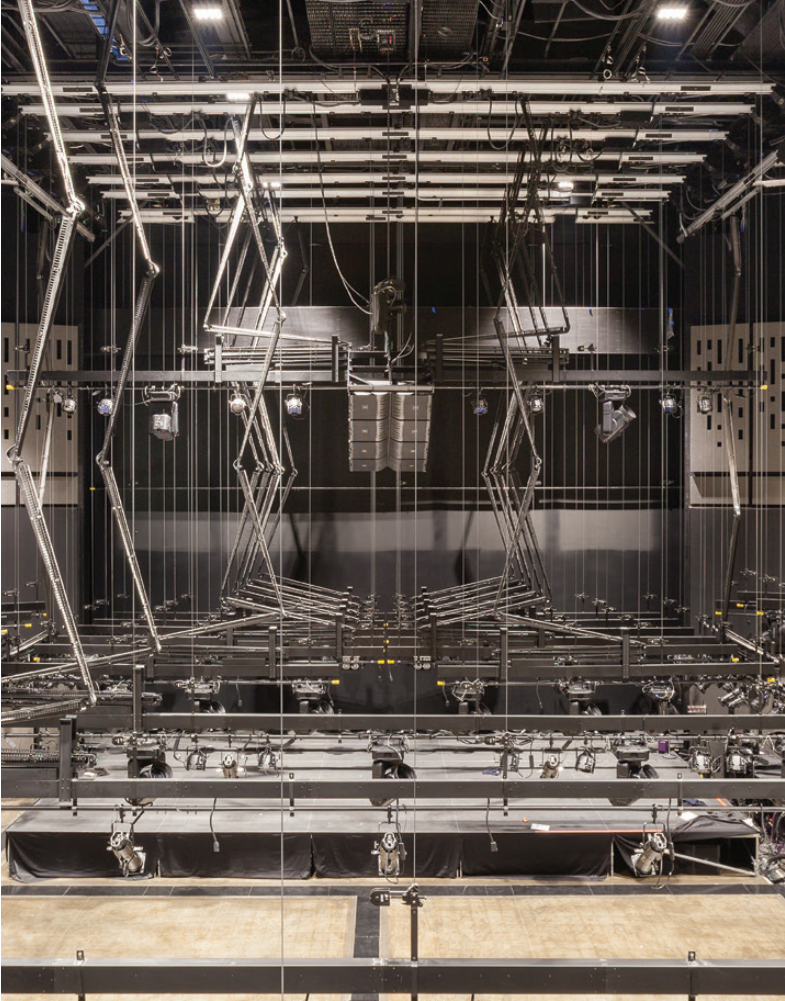
Prodigy Cable Management

Our rethinking of cable management allows ETC hoists to tuck into very shallow plenums, making them the right fit for front-of-house applications, school theaters and existing structures with minimal ceiling height over the stage.

- Fully integrates circuit and data distribution by a unique system using flat cable and a custom distribution trough
- Each flat cable contains six pairs of line-voltage wires for dimmed or non-dimmed circuits, one ground and one CAT5e data wire for Ethernet or DMX data
- Configurations up to forty-eight 20 amp circuits
- All wiring from the top terminal box throughout the system completed at the factory
- Distribution can include as many 120V outlets as desired; 208V outlets optional
- Retracts neatly and compactly with only 30 inches of retracted height
- UL Listed for 100% of load



Stage Pantograph



ETC's Stage Pantograph is a UL-listed solution that is ideal for theaters, concert halls, studios and more. Each Stage Pantograph distributes up to 16 circuits of 20-amp power, collecting wiring neatly and stacking in as little as 30-inches high with no width restrictions. The Stage Pantograph has also been designed to meet NEC standards for cable bending and ventilation.

- For line sets with more vertical travel than batten length
- Up to 16 circuits per Pantograph
- Numerous data cable and emergency circuit options
- Multiple Pantographs possible per line set
- Integrates with standard ETC distribution
- UL Listed for 100% of load

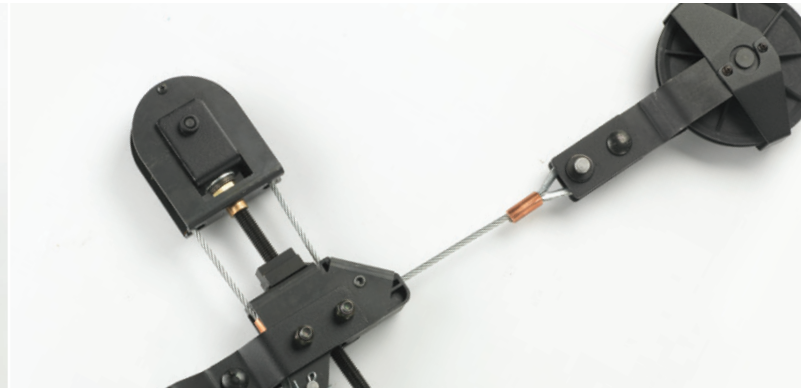
Houselight Pantograph



ETC's Houselight Pantograph offers a sleek solution for dressing power and data cables to your flown distribution. It is a unique trough that can support 50lbs between lift lines without a pipe batten for direct attachment of houselight fixtures.

- Up to eight lift lines spaced four to 15ft on center
- Up 150ft in length
- Data wire optional
- Shipped prewired with knockouts removed for onsite installation of canopy or pendant fixtures attached directly to the trough
- Can be fabricated with dimmed, non-dimmed and emergency-circuit wiring in the Pantograph and the distribution trough to meet UL and NEC requirements
- UL Listed for 100% of load

Traditional Cable Management



Prodigy hoists are often used in remodels and on stages that are built for traditional equipment. That's why ETC has developed accessories that allow Prodigy hoists to support and operate traditional cable management (cable cradles) and SO multi-conductor cables, including single- and multi-purchased multi-conductor cables.

- Available with double-purchase cable cradle
- Compatible with ETC standard distro
- In addition, ETC offers all the same SO cable, ProPlex® cables, Kellums and Kellems accessories found in the Cable Hardware section of the Distribution Price List

ETC Rigging Controllers



QuickTouch, QuickTouch+ and Foundation controllers are at the heart of every ETC Rigging system and were designed with your needs in mind. Their simple and intuitive user interfaces give you extensive operational and safety-feedback features unlike any other rigging control system, such as hold-to-run controls, multiple hardwired E-stops, slackline detection, load profiling, monitoring and reporting. With QuickTouch+ Merge, you can connect up to six QuickTouch+ controllers in one system, giving you the confidence and peace of mind to run multiple fixed- and variable-speed hoists at once from nearly anywhere in your venue.

QuickTouch and QuickTouch+ Controllers



QuickTouch controllers are easy and straightforward to use and simplify show setup and maintenance. With the touch of a button, lighting battens and orchestra shells can be moved to their precise focus position.

- Versions to control one, four, eight, 12, or 24 fixed-speed motors
- Graphical LCD display for position, load and status messages
- Illuminated and dimmable control buttons
- Derives power from hoists
- Optional locking door and rack-mount kit
- Surface- and flush-mount backbox options

Like QuickTouch, QuickTouch+® controllers are incredibly user friendly. Additional features on QuickTouch+ systems allow you to move multiple hoists to different destinations without the overhead cost and complexity of a production-style controller. Built upon the same platform as QuickTouch, it inherits all the core features and adds:

- Five user-generated limits per motor
- Speed-control slider
- Ability to set a target trim and speed before a move
- Versions to control four, eight, 12, or 24 fixed- or variable-speed motors
- Optional QuickTouch+ Merge features allows for multiple QuickTouch+ controllers to be connected together on the same system

Foundation Controllers

The powerful Foundation controller allows you to easily create and run shows at the touch of a button, such as musicals and other theatrical productions. For multipurpose stages, presets can be used to create and restore specific stage configurations for recurring events, like movie nights, speeches or band rehearsals. Stage technicians used to working with other controllers – such as ETC lighting-control consoles – will find Foundation’s user-interface familiar and accessible.

- Eight user trims, two system trims and two user limits per motor
- Up to 999.99 rigging cues
- Manual and target moves
- Joystick for manual operation and speed override
- Concurrent multi-cue operation
- Multi-level user access
- 15” multi-touch LCD screen
- Four operating modes:
 - Manual
 - Preset
 - Cue stack
 - Playback
- Time- or speed-based cues with individual wait times and speeds per motor and ramps
- Show-file storage on internal solid-state drive and external USB drive
- Automatic backlight adjustment based on ambient light conditions
- Control system for up to 48 fixed- and variable-speed motors; up to 48 motors per cue
- Optional Foundation Handheld Remote (FHHR) available



Foundation Handheld Remote



The Foundation Handheld Remote (FHHR) provides portable control for motors on any Foundation-controlled rigging system, giving you the ability to fly your over-stage scenery from an optimal line-of-sight position during rehearsals and performances, regardless of what normally might be in your way. For added safety and control, the FHHR has a hard-wired E-stop, as well as a dead-man switch. The FHHR is an ideal solution for theaters, houses of worship and convention centers.

- Local selection of motors
- Motor position, load and status feedback of all axes
- Accurate manual movement of individual and multiple axes
- Built-in joystick for control of variable-speed hoists and proportional cue-rate control
- Dual-channel hard-wired E-stop button
- Two hard-wired, two-stage, dead-man Enable buttons for ambidextrous operation
- 48 function buttons for numeric entry and navigation
- 6.5-inch (640x480 pixels) 16-bit color LCD touchscreen
- Wired remote control with 50-foot cable
- Communication via Ethernet network
- Rugged, high-strength plastic enclosure
- Adjustable brightness and contrast for low-light conditions
- Weighs three pounds

Fixed-Speed Motor Starter

The right choice for both retrofits and new installations, the Fixed-Speed Motor Starter makes it possible to integrate third-party rigging systems – line-shaft and drum winches, curtain motors, projection screens, banner hoists and more – with ETC Prodigy hoist solutions. It can be combined under the control of ETC's QuickTouch or Foundation rigging controllers.

This small, stand-alone unit is easily installed in place of old motor-control equipment using preexisting wiring. It even supplies power to any of the QuickTouch-family controllers.

- Can control any three-phase motor up to 10hp that complies with ANSI E1.6-1
- Local manual control
- Local-power circuit breaker and motor-overload protection relay
- Input for four travel-limit switches
- Fully-enclosed, rugged all-steel construction
- Limit-switch override for straightforward and safe inspection
- 208/480VAC, 50/60Hz three-phase motors up to 10hp
- Hard-wired dead-man
- Hard-wired E-stop circuits
- Individual E-stop contactor
- Periodic automatic self-test of all safety circuits
- Power supply for all QuickTouch controllers
- Fan-free quiet operation

Optional features

- Position readout via a variety of encoder inputs: absolute, incremental and potentiometer
- Load-cell input with load profiling
- Overload switch will stop movement in overload condition
- Position sensor will allow position display and presets



ETC Rigging Accessories



Our Rigging Accessories provide the necessary solutions and finishing touches needed for your facility. Circuit strips, power distribution boxes, wall-station doors, remotes, brackets, and adapters are all designed to make installation easier and your rigging system even safer to use. Hoist installation adapters are tested to a 10:1 safety factor and are supplied with required mounting hardware.

Accessories



Remote Control

- 35ft pendant
- Plugs into QuickTouch or Foundation controllers



Enable Switch

- Press and hold to allow permitted hoists to operate



External E-stops

- Up to three remote E-stops per QuickTouch or QuickTouch+ controller
- Up to six remote E-stops per Foundation controller



Locking cover

- Locking, hinged cover for QuickTouch and QuickTouch+ controllers
- Independent locking cover available for Foundation controllers



Rack-mount kit

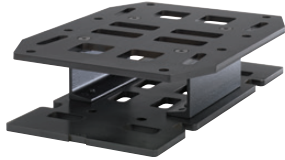
- Works with QuickTouch, QuickTouch+ and Foundation controllers
- Allows your rigging control system to be installed in a standard 19" cabinet alongside other control equipment



Right-Angle Cable Adjusters (RACA)

- Replaces turnbuckles
- Saves up to 17" of batten travel
- Easy to install

Accessories



Height bracket adapters

- Allows Prodigy Powerheads and Compression Tubes to align vertically
- ½" differentials available from ¾" to 5¾"
- Suspended with Grade 5 (B7) threaded rods when mounting-height varies or is unknown
- Adjustments can be made up to 6"



Compression tube mule block

- Maximizes stage space by placing lift lines as far offstage as possible
- Acts as a reverse loft block
- Can be placed as close as 1" in front of the Powerhead



Double purchase

- Increases maximum capacity of lift lines up to 100% at 50% travel
- Can manage cable cradles and traditional cable management systems



Power and control distribution

- Provides a plug-in point for Prodigy hoists
- Connects hoist to the power feed and control station
- Also available in modular distribution strip (PCD raceway)

Curtain machine integrated with Prodigy hoist and QuickTouch/ Foundation control

- Traction-drive curtain machine and medium or heavy-duty curtain track for batten mounting
- Cable speed of 78fpm
- Track-mounted limit switches
- Can be integrated to QuickTouch+ or Foundation controllers
- Curtain machines operate at 115VAC with 24VAC control
- Power and control wiring by others
- UL Listed

Smarter and Safer Rigging Solutions

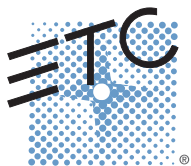
With over 40 years of theater industry experience, ETC Rigging has been a provider of dependable, problem-solving solutions for constrained spaces within the rigging industry.

Our rigging solutions and technologies were built specifically to cater to your exact needs, including:

- Revolutionary Compression Tube technology that disperses lateral loads, making safer, more affordable installation possible in any venue.
- Standard safety features that come on all our hoists, such as load profiling, redundant brakes and slack-line detection.
- Hoists and controllers that support live feedback, load profiling and reporting, giving you the safest rigging system solutions imaginable.
- Rigging system solutions that were designed specifically to reduce installation costs.

And since all our products are backed by our worldwide, 24/7 technical support, you know that ETC Rigging is a name you can trust.





Corporate Headquarters ■ 3031 Pleasant View Rd, PO Box 620979, Middleton WI 53562 0979 USA ■ Tel +1 608 831 4116

London, UK ■ Unit 26-28, Victoria Industrial Estate, Victoria Road, London W3 6UU, UK ■ Tel +44 (0) 20 8896 1000

Rome, IT ■ Via Pieve Torina, 48, 00156 Rome, Italy ■ Tel +39 (06) 32 111 683

Holzkirchen, DE ■ Ohmstrasse 3, 83607 Holzkirchen, Germany ■ Tel +49 (80 24) 47 00-0

Hong Kong ■ Room 1801, 18/F, Tower 1 Phase 1, Enterprise Square, 9 Sheung Yuet Road, Kowloon Bay, Kowloon, Hong Kong ■ Tel +852 2799 1220

Web ■ www.etconnect.com ■ Copyright©2015 ETC. All Rights Reserved. All product information and specifications subject to change. 8002L1002 Rev. E 02/15